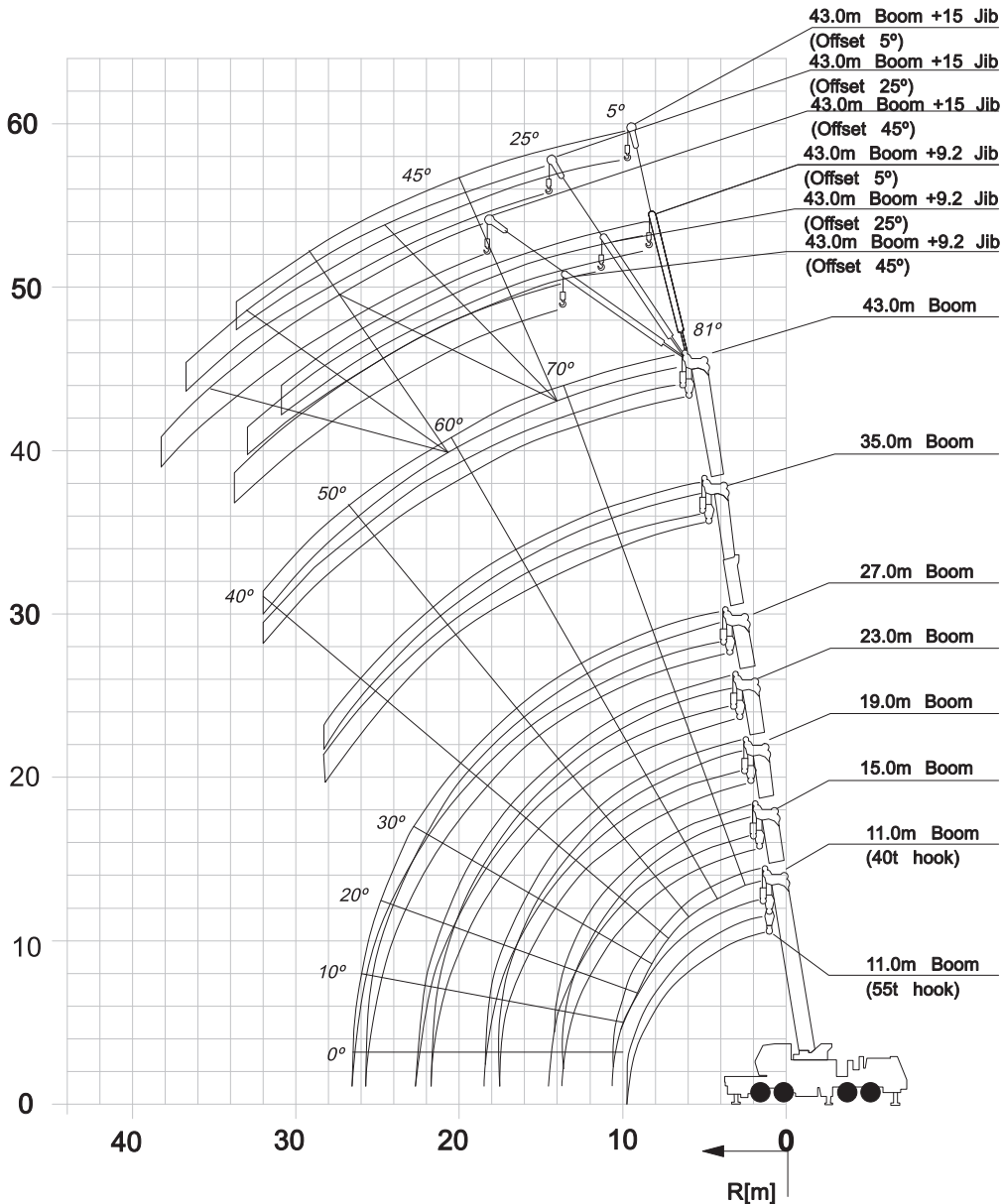


| Operating Radius (m) | Total Rated Loads - Main Boom | | | | | | | |
|----------------------|--|-------|-------|-------|-------|-------|-------|-------|
| | Outriggers fully extended | | | | | | | |
| | Front jack extended (360°) / Front jack not extended (over sides and rear) | | | | | | | |
| | 11.0m | 11.0m | 15.0m | 19.0m | 23.0m | 27.0m | 35.0m | 43.0m |
| 3.0 | 55.00 | 40.00 | 28.00 | 28.00 | 24.00 | | | |
| 3.5 | 43.70 | 40.00 | 28.00 | 28.00 | 24.00 | | | |
| 4.0 | 38.50 | 38.50 | 28.00 | 28.00 | 24.00 | 20.00 | | |
| 4.5 | 34.20 | 34.20 | 28.00 | 28.00 | 24.00 | 20.00 | | |
| 5.0 | 30.80 | 30.80 | 28.00 | 28.00 | 24.00 | 20.00 | 14.00 | |
| 5.5 | 27.80 | 27.80 | 27.40 | 27.20 | 24.00 | 20.00 | 14.00 | |
| 6.0 | 25.40 | 25.40 | 25.00 | 24.80 | 24.00 | 20.00 | 14.00 | |
| 6.5 | 23.20 | 23.20 | 22.80 | 22.60 | 22.50 | 20.00 | 14.00 | 8.00 |
| 7.0 | 21.40 | 21.40 | 21.00 | 20.80 | 20.60 | 19.60 | 14.00 | 8.00 |
| 7.5 | 19.70 | 19.70 | 19.30 | 19.10 | 19.00 | 18.00 | 14.00 | 8.00 |
| 8.0 | 17.90 | 17.90 | 17.75 | 17.50 | 17.30 | 17.25 | 14.00 | 8.00 |
| 8.5 | 16.20 | 16.20 | 15.90 | 15.70 | 15.50 | 15.45 | 13.80 | 8.00 |
| 9.0 | 14.60 | 14.60 | 14.40 | 14.15 | 14.00 | 13.90 | 13.60 | 8.00 |
| 10.0 | | | 11.90 | 11.65 | 11.50 | 11.45 | 12.30 | 8.00 |
| 11.0 | | | 10.00 | 9.75 | 9.60 | 9.50 | 10.40 | 7.80 |
| 12.0 | | | 8.40 | 8.15 | 8.10 | 8.00 | 8.85 | 7.10 |
| 13.0 | | | 7.15 | 6.90 | 6.80 | 6.75 | 7.55 | 6.65 |
| 14.0 | | | | 5.90 | 5.80 | 5.75 | 6.50 | 6.15 |
| 16.0 | | | | 4.30 | 4.20 | 4.10 | 4.95 | 5.35 |
| 18.0 | | | | | 3.00 | 2.95 | 3.75 | 4.20 |
| 20.0 | | | | | 2.10 | 2.05 | 2.80 | 3.30 |
| 22.0 | | | | | | 1.30 | 2.10 | 2.55 |
| 24.0 | | | | | | 0.75 | 1.50 | 2.00 |
| 26.0 | | | | | | | 1.05 | 1.50 |
| 28.0 | | | | | | | 0.65 | 1.05 |
| 30.0 | | | | | | | | 0.70 |
| 31.0 | | | | | | | | 0.50 |

| Total Rated Loads – 43m Boom + 15m Jib | | | | | | | |
|---|-------|--------------------|----------|--------------------|----------|--------------------|----------|
| C - Jib length D - Jib offset E - Boom angle | | | | | | | |
| • Outriggers fully extended - 360° full range • Outriggers fully extended without front jack - over side and over rear | | | | | | | |
| E | D | OFFSET 5° | | OFFSET 25° | | OFFSET 45° | |
| | | Working radius (m) | Load (t) | Working radius (m) | Load (t) | Working radius (m) | Load (t) |
| 81° | 11.75 | 2.50 | 16.20 | 1.20 | 19.40 | 0.70 | |
| 80° | 12.95 | 2.50 | 17.20 | 1.20 | 20.35 | 0.69 | |
| 79° | 14.10 | 2.49 | 18.15 | 1.19 | 21.25 | 0.69 | |
| 78° | 15.10 | 2.45 | 19.10 | 1.17 | 22.15 | 0.68 | |
| 77° | 16.20 | 2.30 | 20.10 | 1.15 | 23.05 | 0.67 | |
| 76° | 17.25 | 2.17 | 21.10 | 1.12 | 24.00 | 0.67 | |
| 75° | 18.25 | 2.06 | 22.15 | 1.10 | 24.85 | 0.65 | |
| 74° | 19.20 | 1.95 | 23.15 | 1.07 | 25.70 | 0.64 | |
| 72° | 21.10 | 1.76 | 25.05 | 1.02 | 27.45 | 0.62 | |
| 70° | 23.00 | 1.59 | 26.80 | 0.97 | 29.10 | 0.61 | |
| 68° | 24.90 | 1.47 | 28.60 | 0.93 | 30.65 | 0.59 | |
| 66° | 26.75 | 1.35 | 30.30 | 0.90 | 32.25 | 0.58 | |
| 64° | 28.60 | 1.24 | 32.00 | 0.87 | 33.80 | 0.57 | |
| 62° | 30.40 | 1.10 | 33.70 | 0.84 | 35.30 | 0.56 | |
| 60° | 32.00 | 0.87 | 35.25 | 0.72 | 36.75 | 0.55 | |
| 59° | 32.80 | 0.76 | 36.00 | 0.66 | 37.45 | 0.55 | |
| 58° | 33.60 | 0.64 | 36.60 | 0.58 | 38.20 | 0.54 | |
| Critical Angle | | 55° | | 56° | | 57° | |

| Total Rated Loads – 43m Boom + 9.2m Jib | | | | | | | |
|---|-------|--------------------|----------|--------------------|----------|--------------------|----------|
| C - Jib length D - Jib offset E - Boom angle | | | | | | | |
| • Outriggers fully extended - 360° full range • Outriggers fully extended without front jack - over side and over rear | | | | | | | |
| E | D | OFFSET 5° | | OFFSET 25° | | OFFSET 45° | |
| | | Working radius (m) | Load (t) | Working radius (m) | Load (t) | Working radius (m) | Load (t) |
| 81° | 10.00 | 3.50 | 12.75 | 2.30 | 14.60 | 1.25 | |
| 80° | 11.05 | 3.50 | 13.70 | 2.30 | 15.45 | 1.25 | |
| 79° | 12.05 | 3.48 | 14.65 | 2.30 | 16.30 | 1.24 | |
| 78° | 13.00 | 3.40 | 15.60 | 2.25 | 17.20 | 1.23 | |
| 77° | 13.90 | 3.23 | 16.50 | 2.19 | 18.05 | 1.21 | |
| 76° | 14.85 | 3.04 | 17.40 | 2.12 | 18.90 | 1.19 | |
| 75° | 15.75 | 2.90 | 18.25 | 2.06 | 19.75 | 1.17 | |
| 74° | 16.70 | 2.75 | 19.15 | 1.99 | 20.55 | 1.16 | |
| 72° | 18.50 | 2.49 | 20.90 | 1.85 | 22.25 | 1.12 | |
| 70° | 20.15 | 2.28 | 22.60 | 1.73 | 23.90 | 1.09 | |
| 68° | 21.85 | 2.09 | 24.20 | 1.62 | 25.40 | 1.06 | |
| 66° | 23.55 | 1.91 | 25.80 | 1.53 | 26.85 | 1.04 | |
| 64° | 25.05 | 1.68 | 27.40 | 1.43 | 28.35 | 1.02 | |
| 62° | 26.55 | 1.41 | 28.85 | 1.24 | 29.85 | 1.00 | |
| 60° | 28.00 | 1.13 | 30.20 | 1.00 | 31.15 | 0.85 | |
| 59° | 28.75 | 1.00 | 30.85 | 0.89 | 31.80 | 0.77 | |
| 58° | 29.45 | 0.86 | 31.50 | 0.77 | 32.45 | 0.69 | |
| 57° | 30.20 | 0.73 | 32.20 | 0.66 | 33.05 | 0.61 | |
| 56° | 30.85 | 0.63 | 32.85 | 0.56 | 33.70 | 0.53 | |
| Critical Angle | | 55° | | | | | |



www.pollockcranes.co.nz

p 07 574 2951