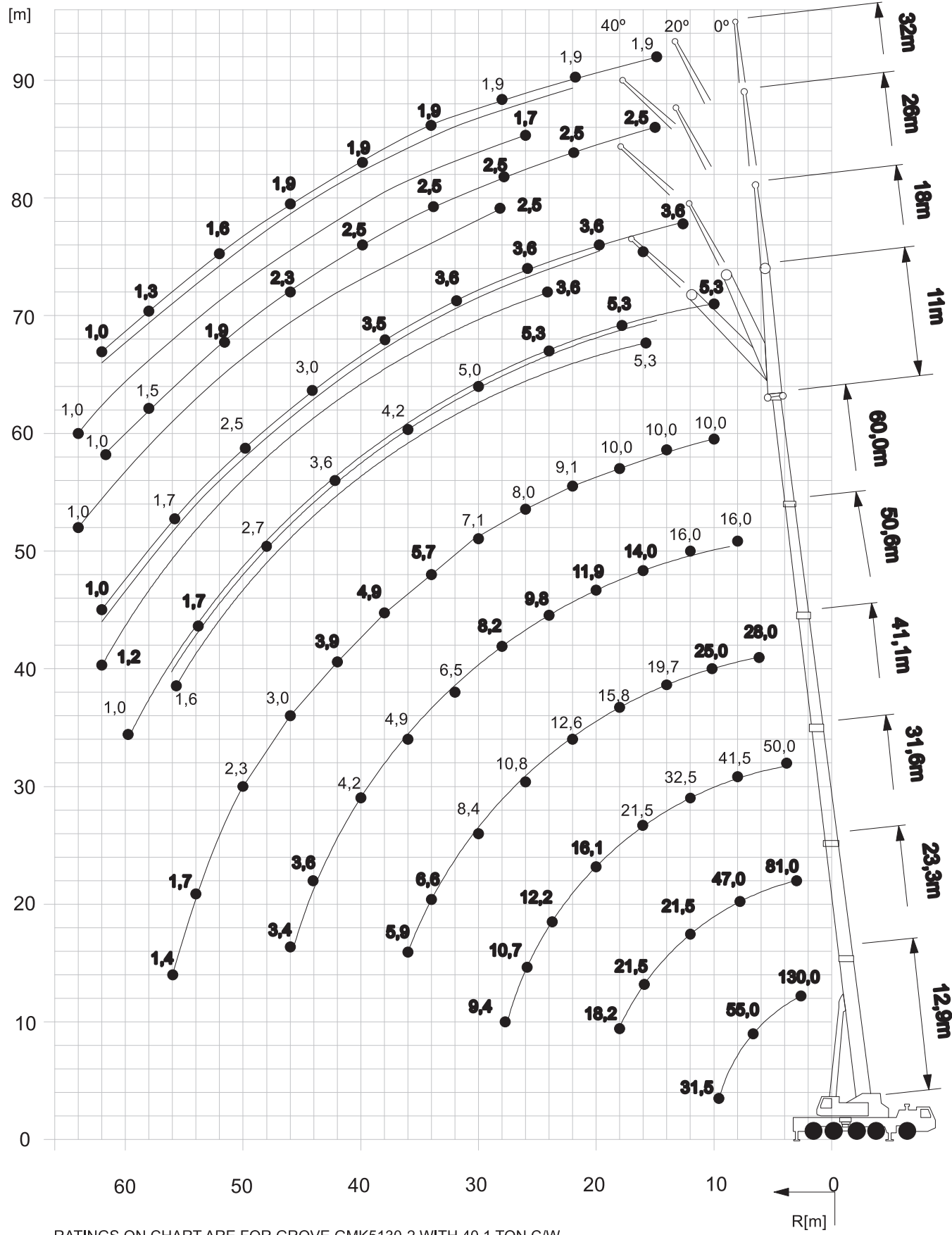


Operating Radius (m)	Total Rated Loads - Main Boom								
	Outriggers fully extended 360° Full Range								
	11.20m	15.20m	19.20m	23.20m	27.20m	31.20m	35.20m	39.20m	43.20m
2.50	80.0/75.0								
3.00	68.0	56.5	53.5	50.5	33.5				
4.00	52.0	49.0	46.0	44.0	33.5	24.5			
5.00	45.0	43.5	41.0	38.5	33.5	24.5	17.5		
6.00	39.0	38.5	37.0	34.5	33.5	23.5	17.5	14.0	
7.00	33.5	34.0	33.5	31.0	30.5	22.0	17.5	14.0	11.0
8.00	27.5	28.5	28.0	27.0	25.5	20.5	17.5	14.0	11.0
9.00		23.5	24.0	23.5	22.0	19.0	16.5	14.0	11.0
10.00		20.0	20.5	20.5	19.2	17.8	15.4	13.7	11.0
11.00		17.1	17.6	17.5	17.0	16.8	14.4	12.9	11.0
12.00		14.8	15.3	15.2	14.9	15.1	13.4	12.2	11.0
13.00			13.4	13.4	13.8	13.6	12.3	11.6	10.6
14.00			11.9	11.9	12.4	12.1	11.6	11.0	10.1
15.00			10.7	11.0	11.1	10.8	11.0	10.0	9.5
16.00			9.6	10.1	10.0	9.7	9.9	9.3	9.1
18.00				8.4	8.3	8.4	8.1	8.1	7.8
20.00				7.0	7.0	7.1	6.9	6.8	6.5
22.00					6.0	6.0	5.8	5.7	5.4
24.00					5.1	5.1	5.0	4.9	4.6
26.00						4.4	4.2	4.1	3.8
28.00						3.8	3.7	3.5	3.3
30.00							3.1	3.0	2.7
32.00							2.7	2.6	2.3
34.00								2.2	1.9
36.00								1.9	1.6
38.00									1.3
40.00									1.0

RATINGS FROM GROVE GMK4075

[www.pollockcranes.co.nz](http://www.pollockcranes.co.nz)

p 07 574 2951



RATINGS ON CHART ARE FOR GROVE GMK5130-2 WITH 40.1 TON C/W